



HOLMES COUNTY, OHIO
PHOTOGRAPHIC ENLARGEMENT

PRODUCED FROM PHOTOGRAPHY EXPOSED JAN & MAR 74

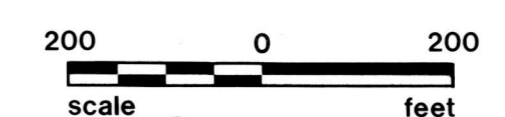


PHOTO NO. 615

1" = 200' QTR. 4 LOT 16, 17 SEC. TWP. 9 RANGE 6
21, 22



13-11