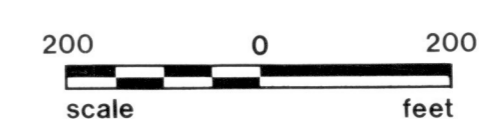




HOLMES COUNTY, OHIO
PHOTOGRAPHIC ENLARGEMENT

PRODUCED FROM PHOTOGRAPHY EXPOSED 3-30-86



SHEET NO. S-2

1" = 200'

QTR. $\frac{3}{4}$ LOT $\frac{12}{17,18,19,20}$ SEC. $\frac{10}{10}$ RANGE $\frac{6}{6}$



12	20
3	19
2	18
1	17