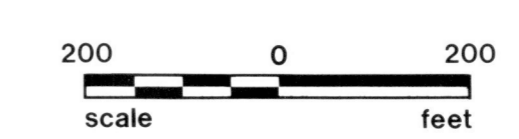




**HOLMES COUNTY, OHIO
PHOTOGRAPHIC ENLARGEMENT**

PRODUCED FROM PHOTOGRAPHY EXPOSED 3-29-86



1" = 200'

9, 10,
14, 15, 19,

SHEET NO. **H-29**

QTR. 1 LOT SEC. 20 TWP. 9 RANGE 7

