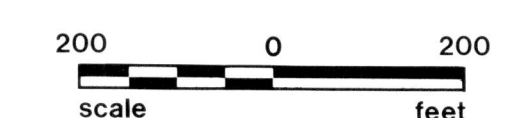




**HOLMES COUNTY, OHIO
PHOTOGRAPHIC ENLARGEMENT**

PRODUCED FROM PHOTOGRAPHY EXPOSED 3-29-86



1" = 200'

14, 15,
16, 17, 18,

SHEET NO. B-21

QTR. 3 LOT 19 SEC. TWP. 9 RANGE 5

