

HOLMES COUNTY, OHIO
PHOTOGRAPHIC ENLARGEMENT

PRODUCED FROM PHOTOGRAPHY EXPOSED JAN. & MAR. 74

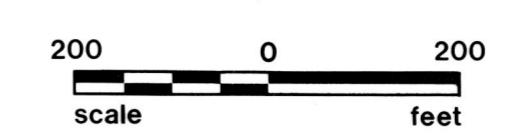


PHOTO NO. 130

1" = 200' QTR. LOT SEC. 25 TWP. 8 RANGE 8

N
R-26
6-130