



**HOLMES COUNTY, OHIO
PHOTOGRAPHIC ENLARGEMENT**

PRODUCED FROM PHOTOGRAPHY EXPOSED JAN & MAR 74

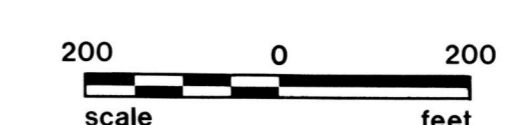


PHOTO NO. 1215

1" = 200' QTR. LOT SEC. 11 TWP. 13 RANGE 13

N
PR
25